

14

AMERICAN

art

PREVIEWS OF MAINSTREAM ARTISTS'
UPCOMING SHOWS COAST TO COAST

DECEMBER 2006

COLLECTOR



UPCOMING GROUP SHOW

Up to 30 works on show
Nov. 18 – Dec. 20, 2006
American Legacy Fine Arts
PO Box 92345
Pasadena, CA 91109
(626) 577-7733

● SHOW LOCATION PASADENA, CA

The Moods of Mount Shasta

Located in the Northern corner of California in the Sierra Nevada mountain range, 14,000 foot high Mount Shasta has long been a place of mystery and beauty. However, despite the strong tradition of plein air painting in California, it has also been overlooked by artists over the years.

Now, thanks to the efforts of Peter Adams, Daniel Pinkham, Frank Serrano and Alexey Steele—all members of the California Art Club—this famous spot is finally getting its artistic due.

"It has a different look than the rest of the Sierras," says Adams, who, in May

2005, along with the other three artists, spent two weeks on location painting in a variety of locations under various weather conditions. "The peak stands out by itself and it is the first of a series of lone volcanoes that continues through Oregon and Washington, like Mount Lassen, Mount Hood, Mount Adams and Mount Ranier."

The four artists each have a distinct style and focus to their individual paintings. Adams concentrates on dramatic light and tonal colors to create mood, while Serrano and Pinkham focus on larger, expressionistic shapes within

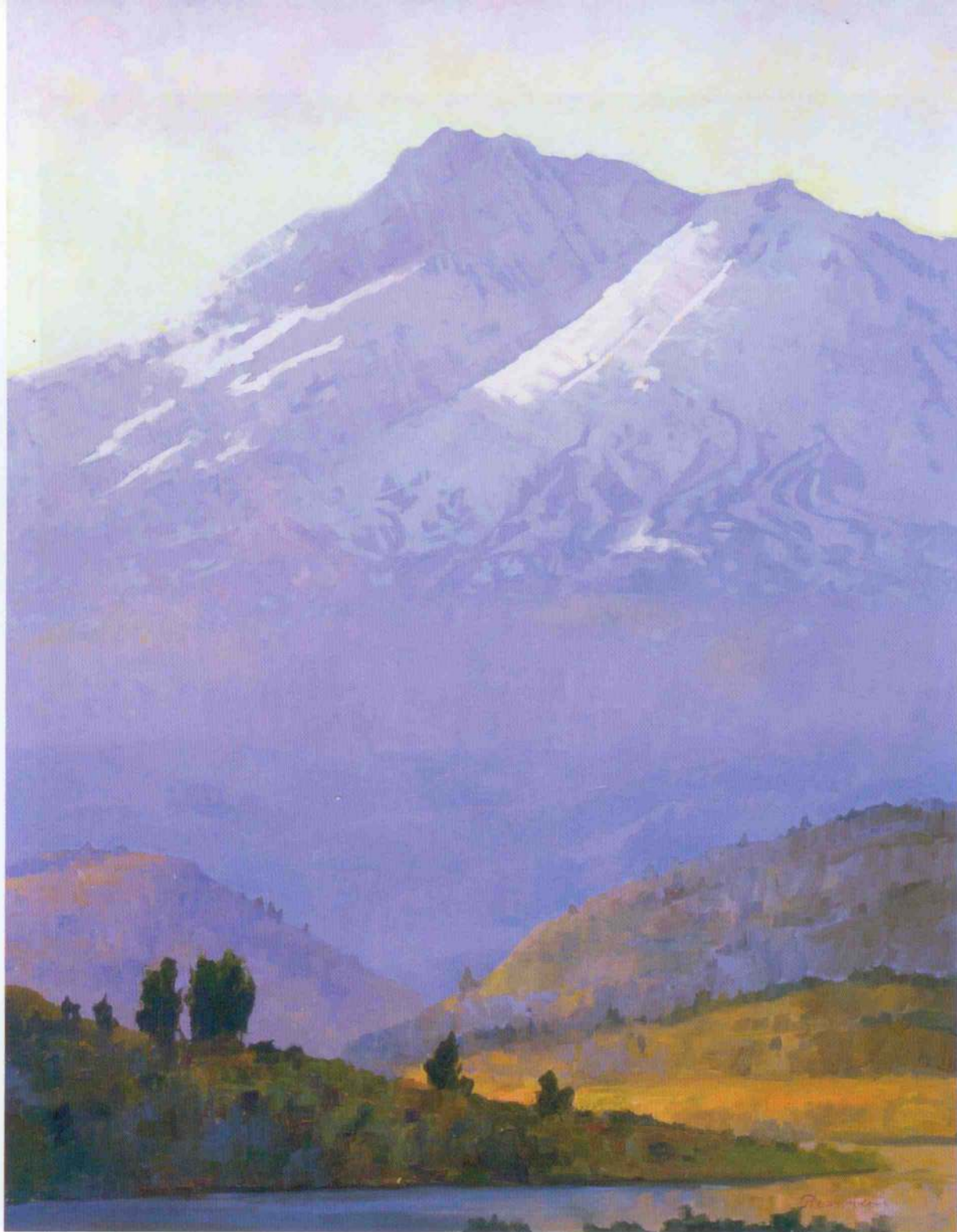
the composition. Steele, the son of famous Russian artist Leonid Steele and a graduate of the Surikov Art Institute in Moscow, is more traditional in his impressionist style, using mainly the classic color palette of the Moscow school.

"All of our styles are so different," says Adams "Dan is a lot quieter and focuses, not on the bigness of the mountain, but rather the trees and meadows, while Alexey is more dramatic in depicting cloud effect with the mountain. Frank's work is more atmospheric and you can actually feel the

PETER ADAMS

CLOUD OPENING OVER TRINITY ALPS, OIL ON BOARD, 12 X 16"





PETER ADAMS
MORNING LIGHT ON MOUNT SHASTA, OIL ON BOARD, 40 X 30"

layers of moisture in the air."

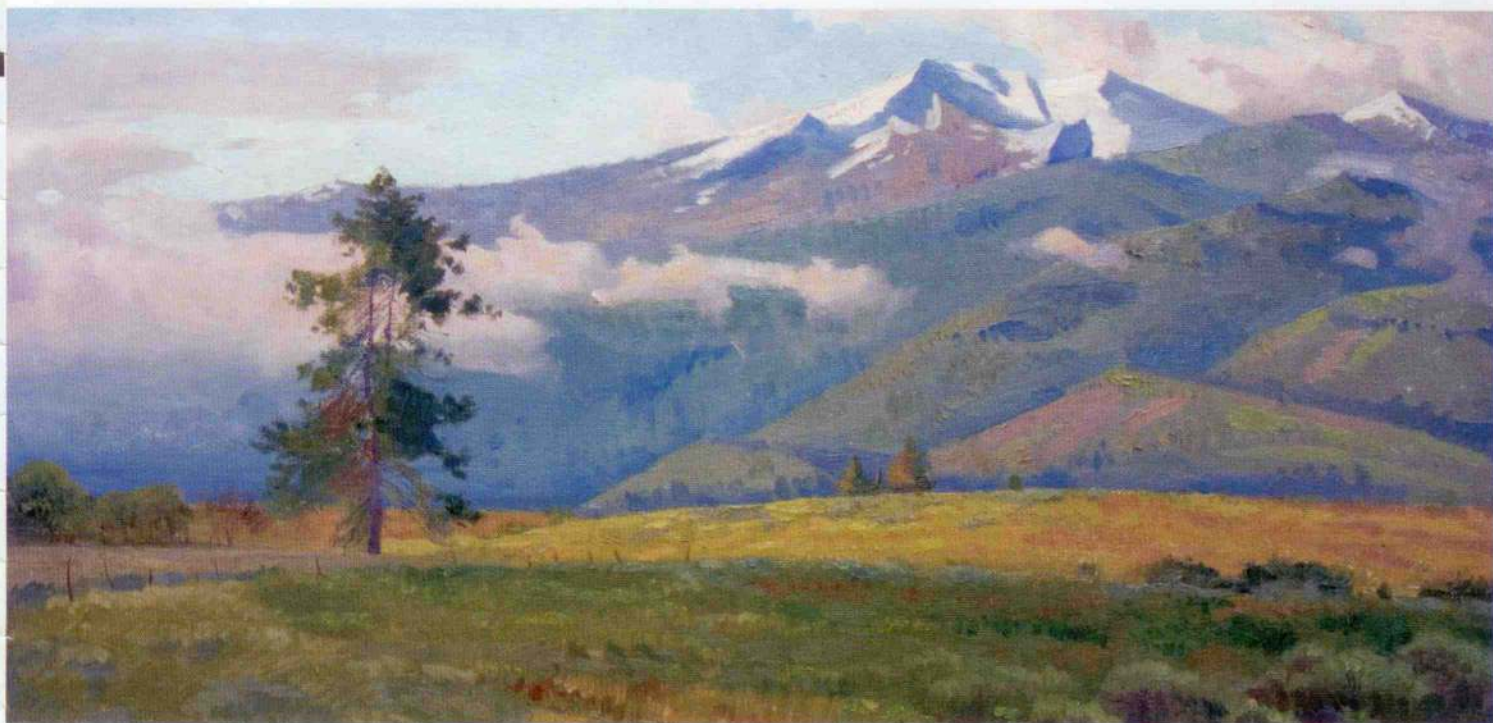
Once on location, Adams says the group became fascinated by the various weather conditions that were unique to the area.

"It's completely surrounded by clouds," says Adams, "Lenticular clouds which almost look like little flying saucers. The peak is so high

that it creates its own weather pattern. On most days, it's hard to see the peak and you definitely don't see the whole mountain every day. We were there in May and there was still snow; you couldn't travel above 6,000 feet without being in snow."

Adams has a deep appreciation for all things Asian and believes he

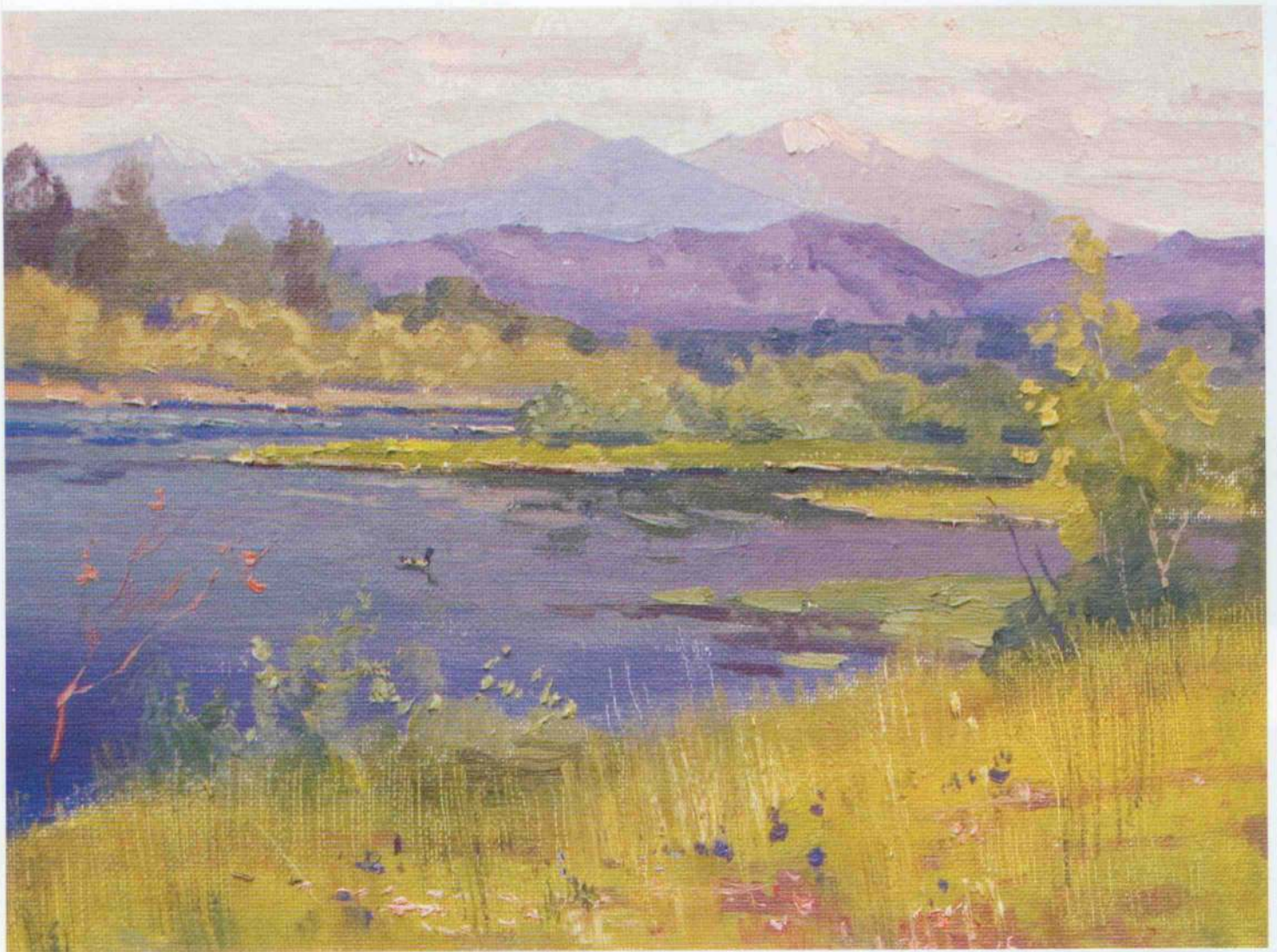
found a sacredness in the area that reminded him of Mount Kailash in Tibet, which serves as the headwaters for the three great rivers in Asia. Mount Shasta is also the point of origin for the American and Sacramento Rivers that twist their way through the state before pouring into the Pacific Ocean.



▲ ALEXEY STEELE
NEW DAY, OIL ON CANVAS, 12 X 24"

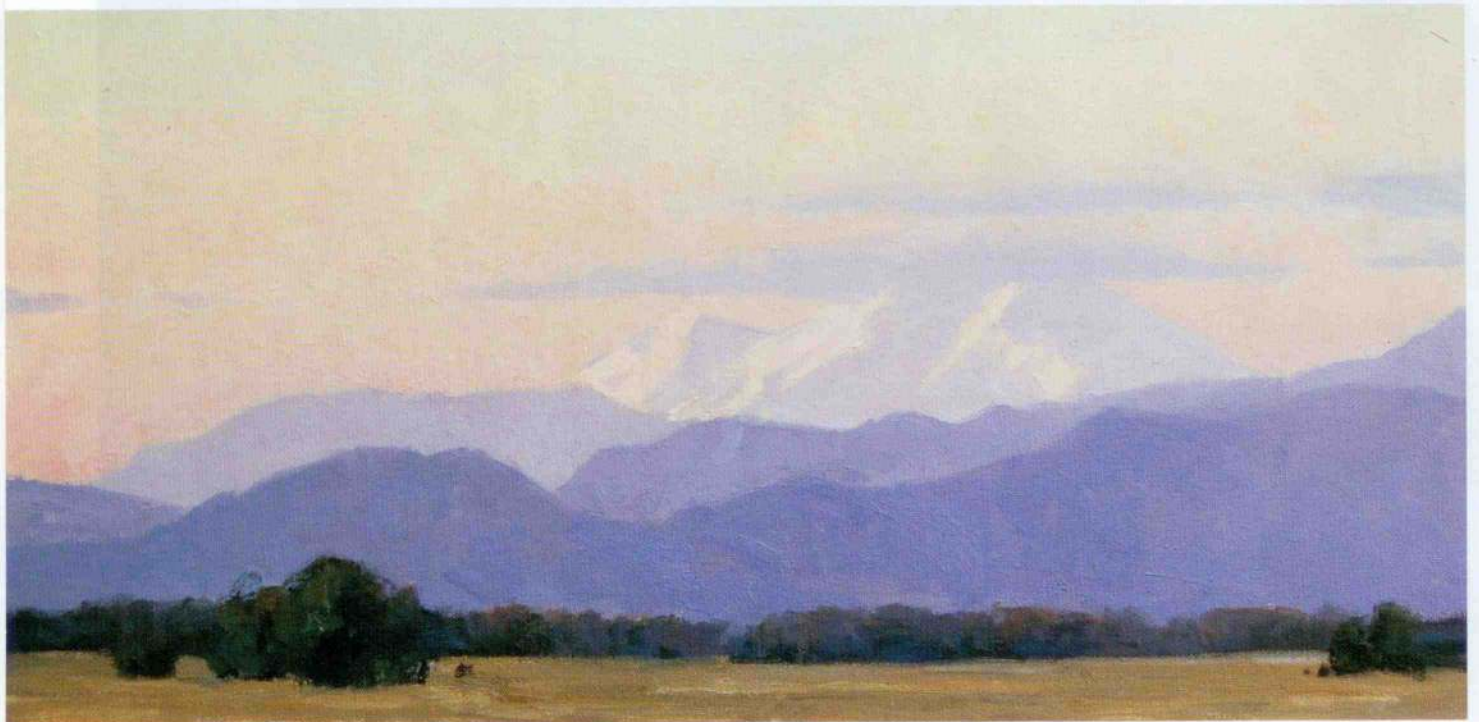
▼ PETER ADAMS
WINTER AT CASTLE LAKE, SHASTA, CA, OIL ON BOARD, 12 X 16"





▲ ALEXEY STEELE
INTO CALM WATERS, OIL ON BOARD, 9 X 12"

▼ FRANK SERRANO
MOUNT SHASTA SUNSET, OIL ON CANVAS, 12 X 24"





ALEXEY STEELE
MASTER AND COMMANDER, OIL ON CANVAS, 16 X 12"


Adams was inspired by the effects of light upon certain areas of the mountain.

"Seeing those pink sunsets hitting the snow-covered mountainside was literally breathtaking," says Adams. "The sunrises and sunsets were definitely a highlight of the trip."

All four of the artists involved in the show are deeply involved in painting plein air. Pinkham founded the Plein Air Artists of California and is a founding member of the Plein Air Painters

of America while Serrano has served as a plein air consultant for Walt Disney Studios.

"Painting on location enriches my life," says Serrano. "And the paintings do not exist as mere pictures, but as a journal through which I can express all my senses." ●

For a direct link to the
exhibiting gallery go to 
www.americanartcollector.com