

 WATCH 6 VIDEOS IN THIS ISSUE SEE PAGE 36



AMERICAN
art
COLLECTOR



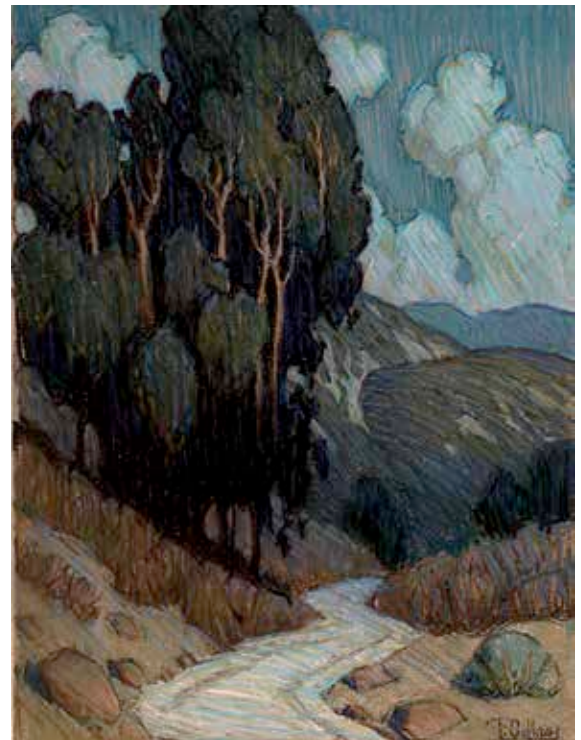
*Also Showcasing
Glass, Ceramics & Wood*



The external and the contemplative



1



2

The artists in *The External and The Contemplative* at American Legacy Fine Arts in Pasadena, California, encourage viewers to enrich their lives through art just as they have done.

Out jogging with his dog in the San Gabriel Mountains, **Peter Adams** came upon a scene that “brought to my mind some of the ruin monuments of antiquity that have been pitted by time and erosion and overgrown with nature’s lush foliage. It made me think of the ideas and philosophies of ancient days that have become hidden from us by the ravages of time. And yet if we find these truths of nature and contemplate their obscure messages we find a beauty that excites the mind and enriches the soul.”

Overhang on the Gabrielino Trail is a romantic depiction of a vine-covered grotto by a rushing stream reminiscent of romantic 19th-century paintings but very much in the spirit of contemporary California art.

Tim Solliday’s pastel *Arroyo Moonlight Pathway* softens the colors of a timeless landscape in blue



3

1
Tony Peters,
Determined, oil
on canvas, 8 x 8"

2
Tim Solliday,
*Arroyo Moonlight
Pathway*, pastel on
paper, 17 x 13"

3
Peter Adams,
*Overhang on the
Gabrielino Trail*, oil
on panel, 16 x 20"

4
Eric Merrell,
Evening Crumbles,
*Angeles National
Forest Highway 2
Near Red Box*, oil
on canvas panel,
12 x 12"

5
Alexey Steele,
Day's First light,
oil on canvas,
15 x 30"



4



5

moonlight. Solliday has a strong technical and formal base for his art, but believes art should also have poetry and be capable of being understood emotionally.

Eric Merrell's *Evening Crumbles, Angeles National Forest Highway 2 Near Red Box* captures the last magical moment

of sunlight on the ridges as well as the still colorful shadows. In an essay on color, Merrell quoted conservationist Aldo Leopold: "Our ability to perceive quality in nature begins, as in art, with the pretty. It expands through successive stages of the beautiful to values as yet uncaptured

by language."

Alexey Steele says, "A painting should amaze the viewer's soul, making it resonate like a violin and raise it above the banality of commonplace existence." He is a proponent of Novorealism, a non-elitist approach to realism. "Novorealism," he says, "is based on tapping into an innate language of human nature and the integrity of personal truth." *Day's First Light* elicits a primal response to the dawn.

Tony Peters paints the commonplace, often the cityscapes of Southern California. "Painting," he says, "has become a doorway that has opened my eyes to a whole spiritual way of looking at things." In his painting *Determined*, he goes inside a diner to focus on a cup of coffee and the ubiquitous items on the deli counter. The soft light and reflections intrigue.

The exhibition, featuring 15 contemporary artists, opens October 15 and continues through October 24. ●