

UPCOMING GROUP SHOW

Up to 25 works

Feb. 9-March 9, 2013

Maxwell Alexander Gallery
6144 Washington Boulevard
Culver City, CA 90232
(310) 839-9242

• SHOW LOCATION CULVER CITY, CA

Works on paper

The new Culver City, California-based Maxwell Alexander Gallery will follow up its grand opening exhibit with a showing of approximately 25 works on paper ranging from etchings to drawings to pastels. Among the artists participating in the show are **Scott Burdick**, **Phil Epp**, **Jeremy Lipking**, **Glenn Dean**, **Logan Maxwell Hagege**, and **Emil Joseph Robinson**. Also available will be historic works by Maynard Dixon, Will Shuster, and others.

Of his charcoal on paper work *Tanzanian Market*, Burdick explains, "My wife, Susan Lyon, had volunteered in a school the previous year and we went back the next year for a painting trip. We were walking through the market near the town where she'd taught English classes when we heard a little boy shouting 'Miss Susan, Miss Susan.' One of the boys that had been in Susan's class last year ran up and took us over to meet his mother, who had come to the market to sell chickens. The woman in this drawing is one of a large group of women who had traveled to the market to sell their chickens."

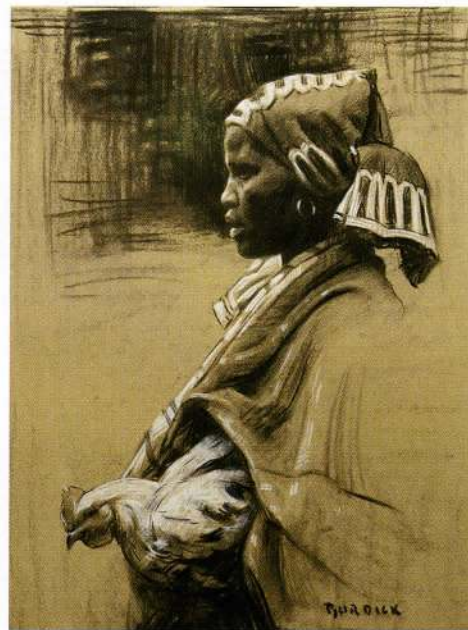
Valley Riders, Dean's preliminary drawing for a larger painting, will appear in the exhibit. "I'm attracted to the big, simple and sculptural shapes this view has," he explains of the work. "I try to fill the canvas with one or two big shapes for an effect of heavy mass and scale. This was from a trip to Monument Valley last summer."

The exhibition opens February 9 with a reception from 7 to 10 p.m. and runs through March 9. ●

For a direct link to the exhibiting gallery go to 
www.americanartcollector.com



EMIL JOSEPH ROBINSON, WOMAN 1,
PASTEL ON PAPER, 30 X 22"



SCOTT BURDICK, TANZANIAN MARKET,
CHARCOAL ON PAPER, 22 X 17"



JEREMY LIPKING, RECLINING FIGURE, GRAPHITE ON PAPER, 18 X 24"