

Fleeting Moments



1



2

Opening November 22 at American Legacy Fine Arts in Pasadena, California, is the *Fleeting Moments 2nd Biennale: Works en Plein Air*, a group exhibition that will feature more than 40 new works created by 24 artists.

The show will “take an extraordinary look at this contemporary painting movement,” the gallery states. “[T]he exhibition focuses on continuing the evolution and growing appreciation of painting outdoors to capture the ephemeral qualities of natural light. By concentrating on the most active and influential, as well as up-and-coming painters in this movement, the exhibition examines how skilled artists interpret spatiotemporal occurrences, i.e., events that happen in a split second of time and space, and connect those momentary experiences to universally felt emotions.”

Artists in the show are **Peter Adams, Brian Blood, Keith Bond, Nikita Budkov, Christopher L. Cook, Steve Curry, Karl Dempwolf, Kathleen Dunphy, Chuck Kovacic, Jean LeGassick, Calvin Liang, Stephen Mirich, Jennifer Moses, Michael Obermeyer, Tony Peters, Daniel W.**



3

Pinkham, Robin Purcell, Kevin Short, Amy Sidrane, W. Jason Situ, William Stout and Jove Wang.

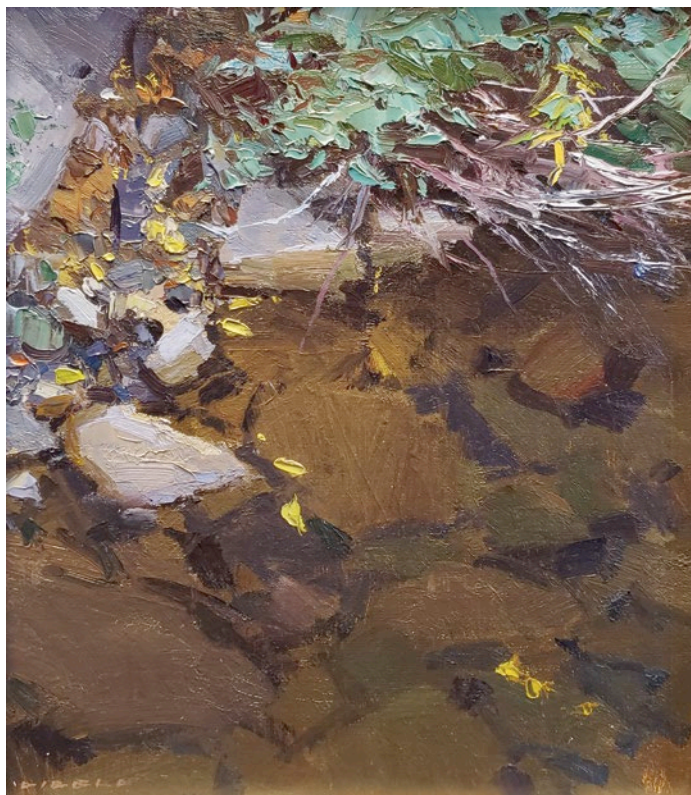
Painter **David Dibble** will be showing his work *Rainy Creek*, which shows submerged rocks on the edge of a gentle creek. “This

piece began as a class demo for a group of plein air students. I had chosen a location for the group to paint that really depended on sunshine, and instead we were greeted by rain, which really made the scene extra challenging,” Dibble says. “Looking



- 1 Dan Schultz,**
Shoreline Shadows,
oil on linen panel,
24 x 24"
- 2 Stephen Mirich,**
*Storm Break, San
Pedro,* oil on canvas,
9 x 12"
- 3 Jove Wang,** *Suzdal,
Russia,* oil on canvas,
18 x 32"
- 4 Jennifer Moses,**
Reflections in Time,
oil on linen panel,
8 x 16"
- 5 David Dibble,** *Rainy
Creek,* oil on panel,
10 x 8"

4



for something to highlight I found this little quiet moment of rocks and stream that was both understated and magnificent."

Dan Schultz will be presenting his beach view, *Shoreline Shadows*, which features a magnificent shadow that is pulled across more than half of the work. "I love painting a dynamic design. When I came across this scene in Santa Barbara, California, I was hooked," Schultz says. "I enlarged the foreground shadow to lead the viewer to the intricate light and shadow section in the heart of the painting. And I used a pink undertone across the whole canvas to add warmth and interest to the abstract shapes of *Shoreline Shadows*."

The exhibition continues through December 15. Call the gallery for complete information about attending the show. ●

American Legacy Fine Arts
Pasadena, CA 91103 • (626) 577-7733
www.americanlegacyfinearts.com

5